

NOTE  
 ACREAGE SHOWN WAS COMPUTED FROM  
 TAX MAPS OF GUILFORD COUNTY.  
 BEARING IS BASED UPON UNITED STATES  
 COAST & GEODETIC SURVEY DATA.

- LEGEND
- GRANITE MONUMENTS ON LINE APPROX EVERY 1/2 MILE
  - GRANITE MONUMENTS ON LINE AT ALL ROADS
  - PROPERTY LINES
  - ACL-1-4 AERIAL PHOTOGRAPH NUMBERS
  - 25 TAX MAP BLOCK NUMBERS OF GUILFORD COUNTY
  - 2 TAX MAP LOT NUMBERS OF GUILFORD COUNTY
  - TAX MAP BLOCK BOUNDARY LINES
  - EXPLORATORY LINE
  - LINE AS AGREED UPON

MAP SHOWING A LINE CONNECTING A POINT IN THE LANDS OF  
 J. VICTOR GARRETT IN OR NEAR THE ALAMANCE COUNTY LINE,  
 AND A POINT, A COMMON CORNER OF THE BOWERS ESTATE, R.T.  
 LAMBETH AND R.L. BRINSON IN OR NEAR THE DAVIDSON COUNTY  
 LINE, SAID POINTS BEING THE ASSUMED SOUTHWEST AND NORTH-  
 EAST AND THE ASSUMED SOUTHWEST AND NORTHWEST CORNERS  
 RESPECTIVELY OF GUILFORD AND RANDOLPH COUNTIES.  
 SCALE 1" = 400'  
 JULY 1, 1948

NOTE  
 THE AFOREMENTIONED BEARINGS AND COORDINATES ARE BASED  
 UPON THE TRIANGULATION AND TRAVERSE DATA IN NORTH  
 CAROLINA AND TAKEN FROM THE NORTH AMERICAN DATUM OF  
 1927 AS PUBLISHED IN THE U.S. COAST AND GEODETIC SURVEY  
 PUBLICATION COVERING TRIANGULATION IN NORTH CAROLINA,  
 SPECIAL PUBLICATION 218. THE BEARINGS ARE GRID BEARINGS.

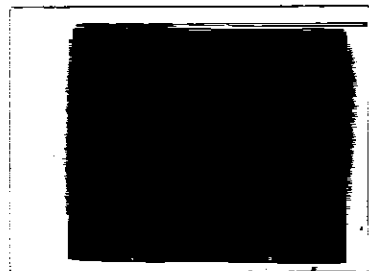
NORTH CAROLINA  
 COUNTY OF Guilford  
 PERSONALLY APPEARED BEFORE ME Margaret Denton Dep.  
 CLERK OF SUPERIOR COURT, RALPH D. STOUT, REGISTERED ENGINEER, WHO  
 BEING BY ME DULY SWORN, DEPOSES AND SAYS THAT THE FOREGOING IS  
 PLAT NUMBER 1 OF THREE PLATS SHOWING THE BOUNDARY LINE BETWEEN  
 GUILFORD AND RANDOLPH COUNTIES THAT SAID PLATS ARE TRUE AND  
 CORRECT PLATS MADE BY HIM FROM A SURVEY MADE BY HIM. THE  
 BEARINGS SHOWN ARE TRUE.  
 THEREFORE LET THE SAID PLAT AND THIS CERTIFICATE BE REGISTERED.  
 WITNESS MY HAND THIS THE 12 DAY OF AUGUST, 1949  
Margaret Denton Dep.  
 CLERK OF SUPERIOR COURT.


Recorded in Office of Register of Deeds, Guilford County  
 this the 12 day of August, 1949, at 8:30 o'clock A.M.  
[Signature]  
 Register of Deeds

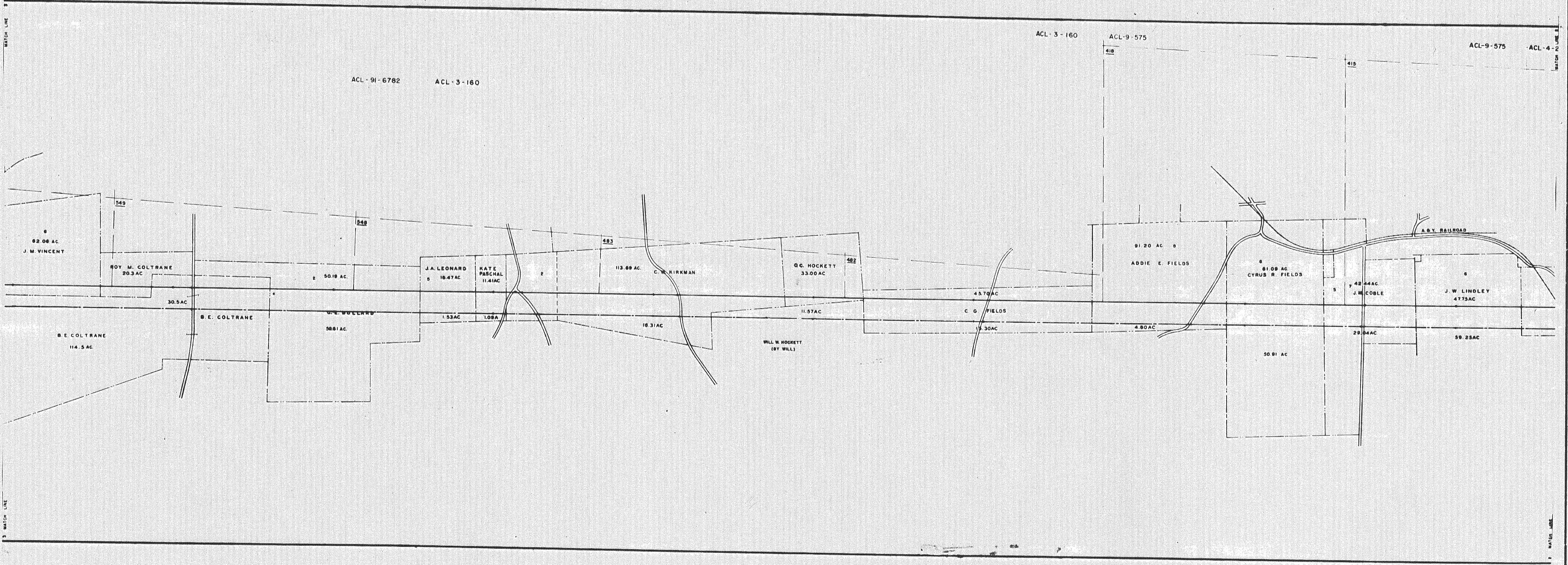
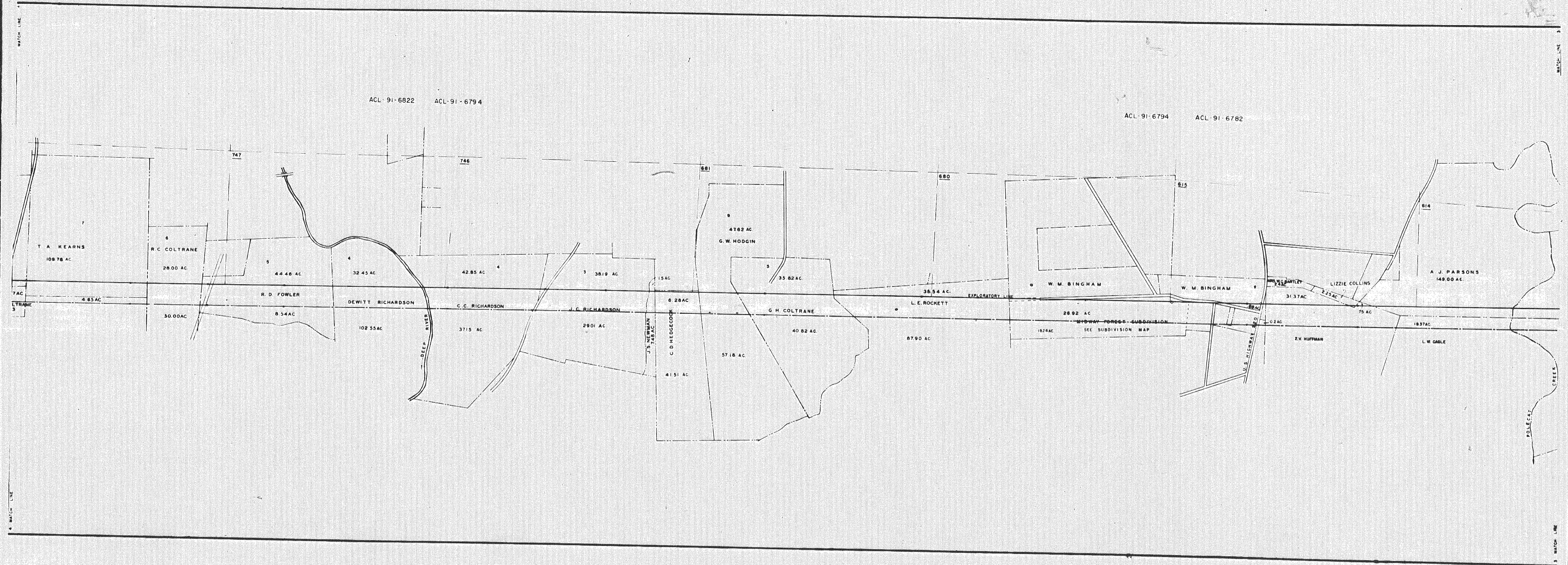
SOUTHERN MAPPING AND ENGINEERING CO.  
 CONSULTING ENGINEERS  
 TEL. 3-4441 P.O. BOX 1185  
 GREENSBORO, NORTH CAROLINA  
 DATE SCALE

17-69

RANDOLPH & GUILFORD COUNTIES



304 X 1  Zion, Ill. U.S. Pat. Nos. 3,167,561; 3,220,133 U.K. Pat. No. 635,478 Others Pending



NORTH CAROLINA  
 COUNTY OF Guilford  
 PERSONALLY APPEARED BEFORE ME Margaret Dyer  
 CLERK OF SUPERIOR COURT, RALPH STOUT, REGISTERED ENGINEER, WHO  
 BEING BY ME DULY SWORN, DEPOSES AND SAYS THAT THE FOREGOING IS  
 PLAT NUMBER 2 OF THREE PLATS SHOWING THE BOUNDARY LINE BETWEEN  
 GUILFORD AND RANDOLPH COUNTIES; THAT SAID PLATS ARE TRUE AND  
 CORRECT PLATS MADE BY HIM FROM A SURVEY MADE BY HIM, THE  
 BEARINGS SHOWN ARE TRUE.  
 THEREFORE LET THE SAID PLAT AND THIS CERTIFICATE BE REGISTERED.  
 WITNESS MY HAND THIS THE 12 DAY OF AUGUST, 1949  
Margaret Dyer  
 CLERK OF SUPERIOR COURT

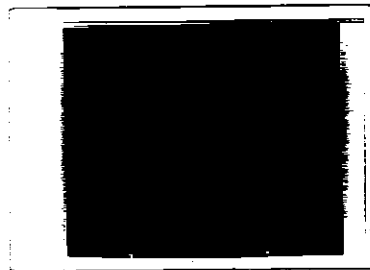
Recorded in Office of Register of Deeds, GUILFORD COUNTY  
 this the 12 day of August 1949, at 8:30 o'clock A.M.

J.H. Meadows Register of Deeds

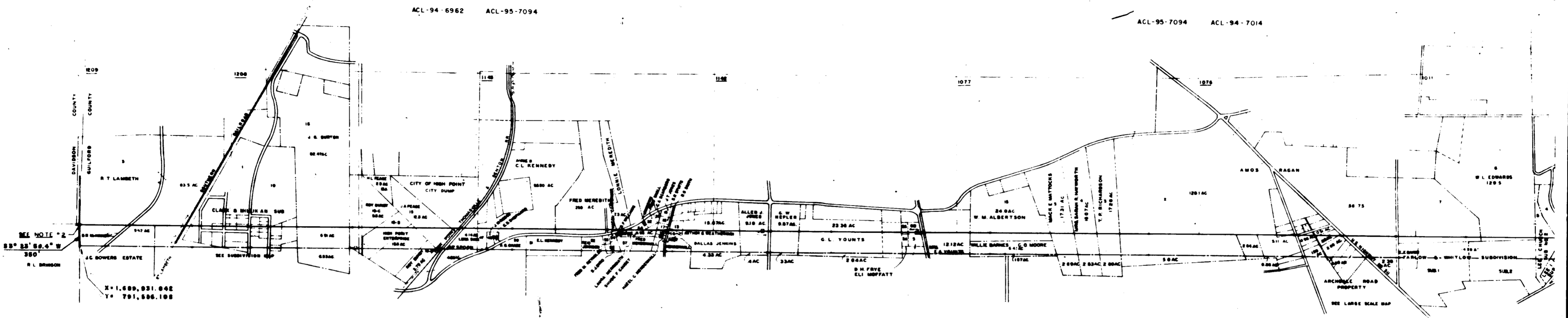
SOUTHERN MAPPING AND ENGINEERING CO.  
 CONSULTING ENGINEERS  
 TEL. 3-4441 P.O. BOX 1185  
 GREENSBORO, NORTH CAROLINA  
 DATE SCALE

RANDOLPH & GUILFORD COUNTIES

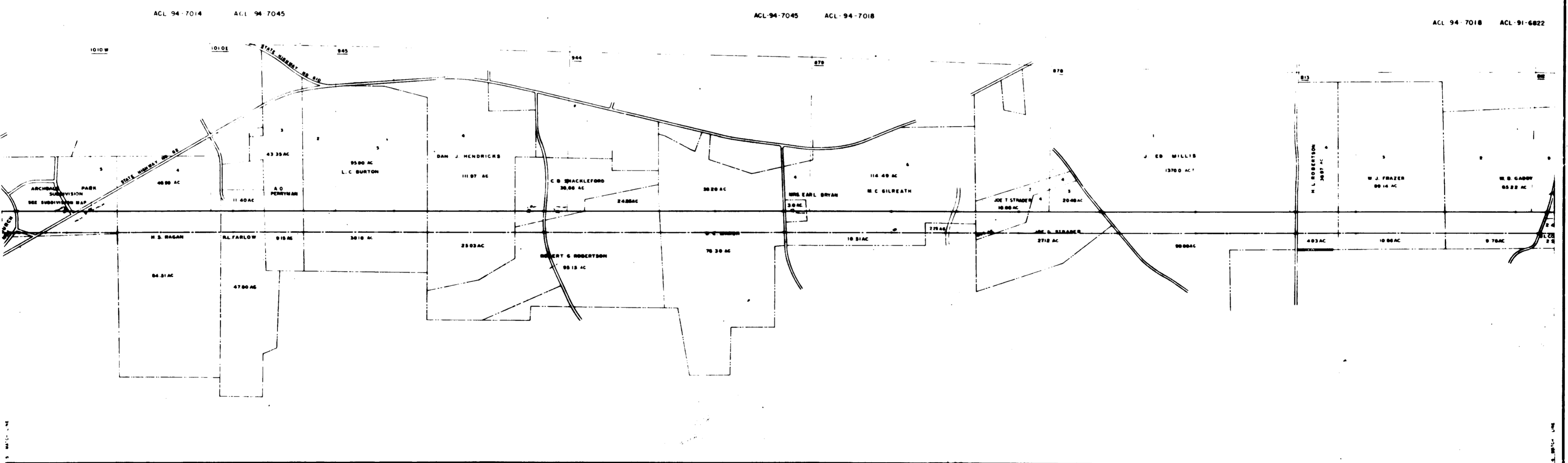
17-70



BR-22-171



NOTE #2  
 THE SOUTHWEST CORNER OF GUILFORD COUNTY  
 AND NORTHWEST CORNER OF RANDOLPH COUNTY  
 AS ASSUMED BY SOUTHERN MAPPING AND  
 ENGINEERING COMPANY



NORTH CAROLINA  
 COUNTY OF Guilford  
 PERSONALLY APPEARED BEFORE ME Margaret Semple Dep.  
 CLERK OF SUPERIOR COURT, RALPH D. STOUT, REGISTERED ENGINEER, WHO  
 BEING BY ME DULY SWORN, DEPOSES AND SAYS THAT THE FOREGOING IS  
 PLAT NUMBER 3 OF THREE PLATS SHOWING THE BOUNDARY LINE BETWEEN  
 GUILFORD AND RANDOLPH COUNTIES; THAT SAID PLATS ARE TRUE AND  
 CORRECT PLATS MADE BY HIM FROM A SURVEY MADE BY HIM. THE  
 BEARINGS SHOWN ARE TRUE.  
 THEREFORE LET THE SAID PLAT AND THIS CERTIFICATE BE REGISTERED.  
 WITNESS MY HAND THIS THE 12 DAY OF AUGUST, 1949  
Margaret Semple Dep.  
 CLERK OF SUPERIOR COURT

Recorded in Office of Register of Deeds, GUILFORD COUNTY  
 this the 12 day of August 1949 at 9:30 o'clock A. M.  
J. W. M. G. G. Register of Deeds

SOUTHERN MAPPING AND ENGINEERING CO.  
 CONSULTING ENGINEERS  
 TEL. 3-4441 P.O. BOX 1185  
 GREENSBORO, NORTH CAROLINA  
 DATE SCALE

17-71

RANDOLPH & GUILFORD COUNTIES

