

Randolph County Line Resurvey

Ben Chavis

Guilford County
Tax Administrator

Marlena Isley, GISP

Guilford County
GIS Manager

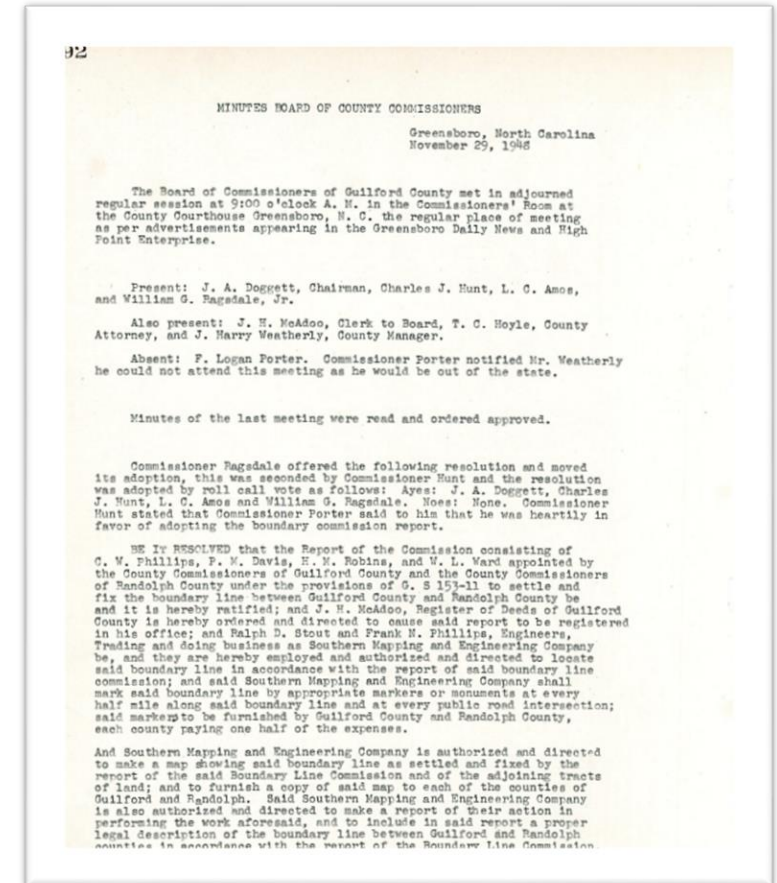


Objectives

- Update the county line between Randolph and Guilford County
- Clean up data and understand impact to residents and parcels
 - County designation
 - School districts
 - Voting districts
 - Property tax bills
- Understand the process and associated community engagement

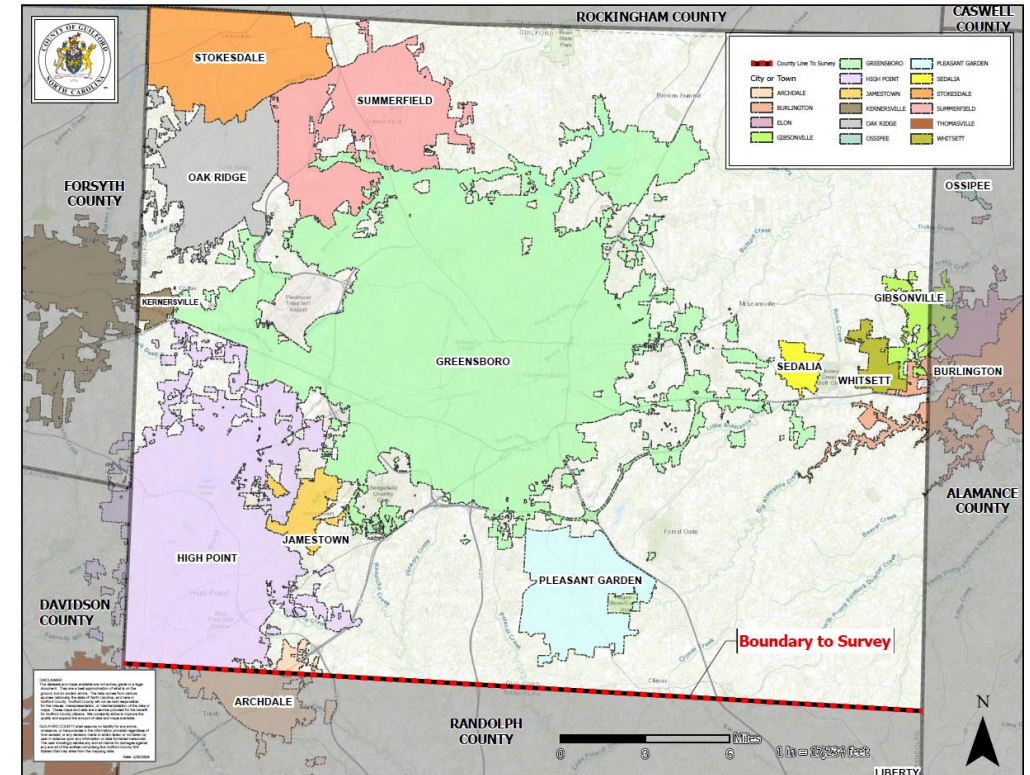
Background

- Randolph County line originally surveyed in 1948.
- Current mapped line off approximately 2' - 20' from West to East
- Randolph County GIS initiated discussions regarding the boundary in summer 2025.
- Changes in coordinate systems, along with the removal of boundary markers over time, have created uncertainty about the exact line location
- 3/2/2026 Randolph BoCC approved the resolution requesting NCGS to survey



Statutory Authority

- **NC General Statutes 153A-18(a)**, if two counties are uncertain as to the exact location of the boundary between them, they may request in writing that the North Carolina Geodetic Survey (NCGS) survey, mark, and map the boundary, and each county may appoint a special commissioner to supervise the surveying, marking, and mapping of the boundary
- No cost to the county



Process

- Both Boards of County Commissioners approves a resolution to request the North Carolina Geodetic Survey (NCGS) to mark and map the boundary
- Direct mailing notification educating residents on the process a few weeks prior to NCGS initiating the survey
- NCGS surveys the line and completes monument setting
- Both Boards of County Commissioners approve the NCGS-surveyed line
- NCGS mails official state notification letters to property owners regarding the survey
- Counties work jointly on communication letters with maps and associated information

Anticipated Impact

- Estimated **282** Guilford County parcels impacted
 - Approximately 116 Guilford buildings will be affected
- Estimated **311** Randolph County parcels affected
- Preliminary acreage calculations:
 - 89.24 Ac. from Guilford to Randolph
 - 6.8 Ac. from Randolph to Guilford
- An estimated 36 Guilford voters in District 2 could be impacted
 - Bedroom determines which district for elections
- No Guilford students expected to be impacted based on preliminary analysis



[ArcGIS Interactive Guilford/Randolph County Line Dashboard](#)

Requested Action

- Adopt resolution authorizing the North Carolina Geodetic Survey to survey, mark and map the boundary between Guilford and Randolph Counties.

Questions?