

Addendum No. 4

Project: Guilford County Law Enforcement Center Renovation
Rebid Event # 629

To: All Plan Holders

Addendum Date: August 2, 2018

This Addendum forms a part of and modifies the Bidding Documents dated June 26, 2018 as described below and consists of two (2) pages and the attachments described. Attachments are considered a part of this addendum and therefore a part of the Contract Documents.

SPECIFICATIONS

ITEM	SECTION	DESCRIPTION
1.	Document 00010	<u>Table of Contents:</u> Delete - Section 08 17 00 Integrated Door Opening Assemblies Add – Section 08 34 83 Elevator Door Smoke Containment System
2.	Document 00311	<u>Schedule of Values:</u> (To be reissue with the last Addendum) Delete - Section 08 17 00 Integrated Door Opening Assemblies Add – Section 08 34 83 Elevator Door Smoke Containment System
3.	Section 01 20 00	Paragraph 1.6.C.1 add the following allowance: f. Electrical Contractor shall include \$100,000.00 in his bid for the Owner to use by Change Order.
4.	Section 01 23 00	<u>Schedule of Unit Prices:</u> See reissued page 01 23 00-3 (attached)
5.	Section 08 34 83	<u>Elevator Door Smoke Containment System:</u> (attached)
6.	Section 12 30 40	Paragraph 1.8.A. Delete in its entirety and revise to read as follows: 1.8.A. All materials and workmanship covered by this section will carry a one (1) year warranty from date of acceptance.

DRAWINGS

ITEM	SHEET	DESCRIPTION
7.	A2.2	2226 Level 2 – Mechanical – Floor Plan – Roof Plan: Delete elevator doors 202A & 202B and provide smoke curtains at each opening per spec section 08 34 83.
8.	A2.3	2326 Level 3 – Tower – Floor Plan: Delete elevator doors 306A & 307A and provide smoke curtains at each opening per spec section 08 34 83.
9.	A2.3	2311 Level 4 – Tower – Floor Plan: Delete elevator doors 402A & 407A and provide smoke curtains at each opening per spec section 08 34 83.
10.	A2.3A	23A26 Level 3 – Tower – Floor Plan Alternate No.1: Delete elevator doors 306A & 307A and provide smoke curtains at each opening per spec section 08 34 83.
11.	A2.3A	23A11 Level 3 – Tower – Floor Plan Alternate No.1: Delete elevator doors 402A & 407A and provide smoke curtains at each opening per spec section 08 34 83.

12. A2.4 2426 Level 5 – Tower – Floor Plan: Delete elevator doors 502A & 507A and provide smoke curtains at each opening per spec section 08 34 83.
13. A2.4 2411 Level 6 – Tower – Floor Plan: Delete elevator doors 606A & 607A and provide smoke curtains at each opening per spec section 08 34 83.
14. A2.4A 23A11 Level 5 – Tower – Floor Plan – Alternate No.1: Delete elevator doors 502A & 507A and provide smoke curtains at each opening per spec section 08 34 83.
15. A2.5 2526 Level 7 – Tower – Floor Plan: Delete elevator doors 702A & 707A and provide smoke curtains at each opening per spec section 08 34 83.
16. A2.5 2511 Level 8 – Tower – Floor Plan: Delete elevator doors 802A & 807A and provide smoke curtains at each opening per spec section 08 34 83.
17. A10.4 Detail 10429 Elevator Shaft Single Door: Delete detail. Replace with detail ADD 4-1. (attached)
18. A11.1 Door and Frame Schedule: Delete the following elevator doors/hardware and provide smoke curtains at each opening per spec section 08 34 83: Doors 202A, 202B, 306A, 307A, 402A, 407A, 502A, 507A, 606A, 607A, 702A, 707A, 802A and 807A.
19. FP1.1 Detail 1/FP1.1 - Fire Protection Level 1 Piping – See Bulletin Drawings BD-FP1 (attached)

END OF ADDENDUM

Guilford County Law Enforcement Center
401 W. Sycamore Street, Greensboro, NC 27401
Guilford County Law Enforcement Center Renovation

- F. Alternate No 6: State the amount to be added from the Base Proposal Price to Provide 5-year extended chiller warranty and service. This Alternate will remain valid until submittal and approval of product data, and shop drawings.

Add: _____ dollars

- G. Alternate No 7: State the amount to be added from the Base Proposal Price for the Distributed Antenna System to include 700 MHz coverage for FirstNet capability per Specification Section 28 05 37. This Alternate will remain valid until submittal and approval of product data, and shop drawings.

Add: _____ dollars

- H. Alternate No 8: State the amount to be added to or deducted from the Base Proposal Price to provide Alerton Controls per Section 23 09 00 Automatic Temperature Controls in lieu of other approved manufactures. This Alternate will remain valid until submittal and approval of product data, and shop drawings.

Add: _____ dollars or Deduct: _____ dollars.

SCHEDULE OF UNIT PRICES

- | | |
|---|-----------------|
| 1. Excavation and offsite disposal of unsuitable soil & replacement with offsite borrow backfill/fill compacted | _____ /cu. Yds. |
| 2. Excavation and offsite disposal of unsuitable soil & replacement with compacted ABC Stone | _____ /cu. Yds. |
| 3. Data outlets – (Data Outlet, include data jack, plate, box, J-hooks, 15ft of 3/4" conduit (for Stub-up) and 250ft of cat 6 cable). | _____ /ea. |
| 4. Power outlets- (20 AMP duplex receptacle on a dedicated circuit, include (1) 20 AMP single pole breaker, box, plate, 3/4" conduit and (3) #12 wire approximately 100ft in length). | _____ /ea. |
| 5. Exit lights – (Exit Light fixture in ceiling, connect to existing circuit, include box, mounting device, 3/4" conduit and (3) #12 wire approximately 50ft in length). | _____ /ea. |
| 6. CCTV outlets – (CCTV outlet, include jack, plate, box, J-hooks, 15ft of 3/4" conduit (for Stub-up) and 250ft of RG6 cable). | _____ /ea. |
| 7. Card Reader – (Card reader mounted on wall, connect to existing card reader control cabinet, include card reader, box, J-hooks, 15ft of 3/4" conduit (for Stub-up) and 200ft of wire/cable). | _____ /ea. |
| 8. Sprinkler head relocation | _____ /ea. |
| 9. Fire alarm pull station- (Fire Alarm pull station mounted on wall, connect to existing loop include pull station, box, J-hooks, 15ft of 3/4" conduit (for Stub-up) and 100ft of Fire Alarm wire/cable). | _____ /ea. |
| 10. Fire Alarm horn/strobes – (Fire Alarm horn/strobe mount on wall, connect to existing loop, include horn/strobe, box, J-hooks, 15ft of 3/4" conduit (for Stub-up) and 100ft of Fire Alarm wire/cable). | _____ /ea. |
| 11. Window enlargement per Alternate No 4. | _____ /ea. |
| 12. Exterior Exposed Aggregate Precast Concrete-surface and aggregate repair per structural description | _____ /ea. |
| 13. Spray applied fireproofing | _____ /ea. |

PART 2 – PRODUCTS (NOT USED)

PART 3 – EXECUTION (NOT USED)

END OF SECTION 01 23 00

SECTION 08 34 83
ELEVATOR DOOR SMOKE CONTAINMENT SYSTEM

PART 1: GENERAL

1.1 SUMMARY

- A. Section Includes: Smoke detector activated elevator door smoke containment screen and control system designed to provide a tight-fitting, smoke- and draft-control assembly.
- B. Products Supplied but Not Installed Under This Section:
 - 1. End-of-line diode (3.9V, 2W). Installed at smoke detector to monitor the circuit.
- C. Related Sections:
 - 1. 09 91 00–Paints: Field painting of specified components.
 - 2. 28 31 00–Detection and Alarm: Provision of smoke detectors.
 - 3. 14 21 50–Electric Traction Elevators.
 - 4. Division 26 Sections for 120VAC and control circuit power including conduit, boxes, conductors, wiring devices, and emergency power.

1.2 REFERENCES

- A. ASTM A240/240M – Standard Specification for Heat Resisting Chromium and Chromium-Nickel Stainless Steel Plate, Sheet and Strip for Pressure Vessels.
- B. ICC Evaluation Service ES-AC77 – Acceptance Criteria for Smoke-Containment Systems Used with Fire-Resistive Elevator Hoistway Doors and Frames.
- C. ICC Evaluation Service report ESR-1136
- D. NFPA Codes and Standards:
 - 1. 70 – National Electrical Code.
 - 2. 105 – Recommended Practice for the Installation of Smoke-Control Door Assemblies.
 - 3. 72-2002 and 2007 – National Fire Alarm Code
- E. International Building Code
 - 1. 2003.
 - 2. 2006
 - 3. 2009
 - 4. 2012
- F. UL Standards:
 - 1. 268 – Smoke Detectors for Fire Protective Signaling Systems.
 - 2. 508 – Industrial Control Equipment.
 - 3. 864 – Control Units for Fire Protective Signaling Systems.
 - 4. 1784 – Air Leakage Tests for Door Assemblies.

1.3 SUBMITTALS

- A. Reference Section 01 33 00–Submittal Procedures; submit following items:
 - 1. Product Data.

2. Shop Drawings: Include door width and height, jamb width, jamb and head projection, screen width, mounting height, and housing width. Show and identify related work performed under other sections of the specifications.
3. Quality Assurance/Control Submittals:
 - a. Qualifications:
 - 1) Proof of manufacturer qualifications.
 - 2) Proof of Installer qualifications.
 - b. Certifications: Copy of specified items.
 - c. Manufacturer's installation instructions and testing procedures

1.4 CLOSEOUT SUBMITTALS

- A. Comply with Section 01 78 10—Closeout Submittals; submit following items:
 1. Operation and Maintenance Manual.
 2. Manufacturer's Warranties

1.5 QUALITY ASSURANCE

- A. Overall Standards:
 1. Manufacturer shall maintain a quality control program in accordance with ICC-ES Acceptance Criteria 77.
- B. Qualifications:
 1. Manufacturer Qualifications: Minimum seven years' experience in producing smoke containment systems of the type specified.
 2. Installer Qualifications: Factory trained by manufacturer.
- C. Certifications:
 1. Manufacturer's ICC Evaluation Service report ESR-1136 showing compliance with:
 - a. ICC-ES AC77
 - b. UL standard 1784
 - c. AST, E84
 - d. NFPA 105
 2. IAS (IAS is a trademark of International Accreditation Service) Accredited Testing Laboratory Labels for UL Standard 1784
 3. IAS (IAS is a trademark of International Accreditation Service) Accredited Testing Laboratory Labels for UL Standard 864
 4. California Department of Forestry and Fire Protection and Office of the State Fire Marshal Listing.
 5. OSHPD Anchorage Pre-Approval No. OPA-0318
 6. Must comply with requirements of NC Department of Labor, Elevator and Amusement Device Divisions.
- D. Pre-Installation Meeting:
 1. Schedule and convene a pre-installation meeting prior to commencement of field operations with representatives of the following in attendance: Owner, Architect, General Contractor, smoke containment system sub-contractor, painting sub-contractor, and electrical sub-contractor.
 2. Review substrate conditions, requirements of related work, installation instructions, storage and handling procedures, and protection measures.
 3. Keep minutes of meeting including responsibilities of various parties and deviations from specifications and installation instructions.

1.6 DELIVERY, STORAGE, AND HANDLING

- A. Comply with manufacturer's instructions.

1.7 WARRANTY

- A. Provide manufacturer's standard one-year warranty.
- B. Maintenance and Testing:
 - 1. Perform minimum semi-annual maintenance and testing on each smoke containment system as required by the manufacturer's warranty, code agency evaluation reports, and as required by local authority having jurisdiction.
 - 2. Provide test documentation.

PART 2 - PRODUCTS

2.1 MANUFACTURED UNITS

- A. Model 400
- B. Manufacturer:
 - 1. Basis of design is products manufacturer by Smoke Guard, 287 Maple Grove, Boise, Idaho, 83704 <http://www.smokeguard.com/>. Local distributor: Maxson and Associates.
 - 2. Products of other manufacturers will be considered provided they meet all of the applicable code requirements. Requests for architect's approval and complete technical data for evaluation must be received at least 10 days prior to the bid date. Additional approved manufacturers will be issued by addendum
- C. Label each smoke containment system with following information:
 - 1. Manufacturer's name.
 - 2. Maximum leakage rating at specified pressure and temperature conditions.
 - 3. Label of quality control agency.

2.2 PERFORMANCE

- A. Air Leakage: Not to exceed 3 cfm (0.001416 m³/s) per sf of door opening at 0.1 in (25 Pa) water pressure differential at ambient temperature and 400 degrees F (204 degrees C) tested per IBC 2006, 2009, and 2012.

2.3 COMPONENTS

- A. Screen:
 - 1. Film: Minimum 1 mil (0.025 mm) thick transparent polyimide film reinforced with minimum 100 denier Nomex yarn at .25 in (6.35 mm) each way.
 - 2. Magnetic Strips: Flexible multi-pole strips attached to longitudinal edges of film with low modulus silicone adhesive.
- B. Housing: 20 gages, powder coated, cold rolled steel container with dust cover and door with concealed hinges and a latch. Housings are 55 inches or 64 inches in length, plus 1-1/2 inches for a junction box on the left side. Housing door to automatically close once screen is restored in housing.

- C. Mandatory Auxiliary Rails:
 - 1. Material: 16 gage ASTM A 240/240M, Type 430, ferritic stainless steel.
 - 2. Size: 2 in (51 mm) wide, 1" (25 mm) deep, as shown in Shop Drawings.
- D. Rewind Motor: NFPA 70, 90v DC.
- E. Release Mechanism: IAS (IAS is a trademark of International Accreditation Service) Accredited Testing Laboratory Labels for UL Standard 864
- F. Screen Rewind Switch: Include switch to rewind screen into housing.

PART 3 - EXECUTION

3.1 EXAMINATION

- A. Examine substrates upon which work will be installed.
 - 1. Verify related work performed under other sections is complete and in accordance with Shop Drawings.
 - 2. Verify wall surfaces and elevator door frames are acceptable for installation of smoke containment system components.
- B. Coordinate with responsible entity to perform corrective work on unsatisfactory substrates.
- C. Commencement of work by installer is acceptance of substrate.

3.2 INSTALLATION

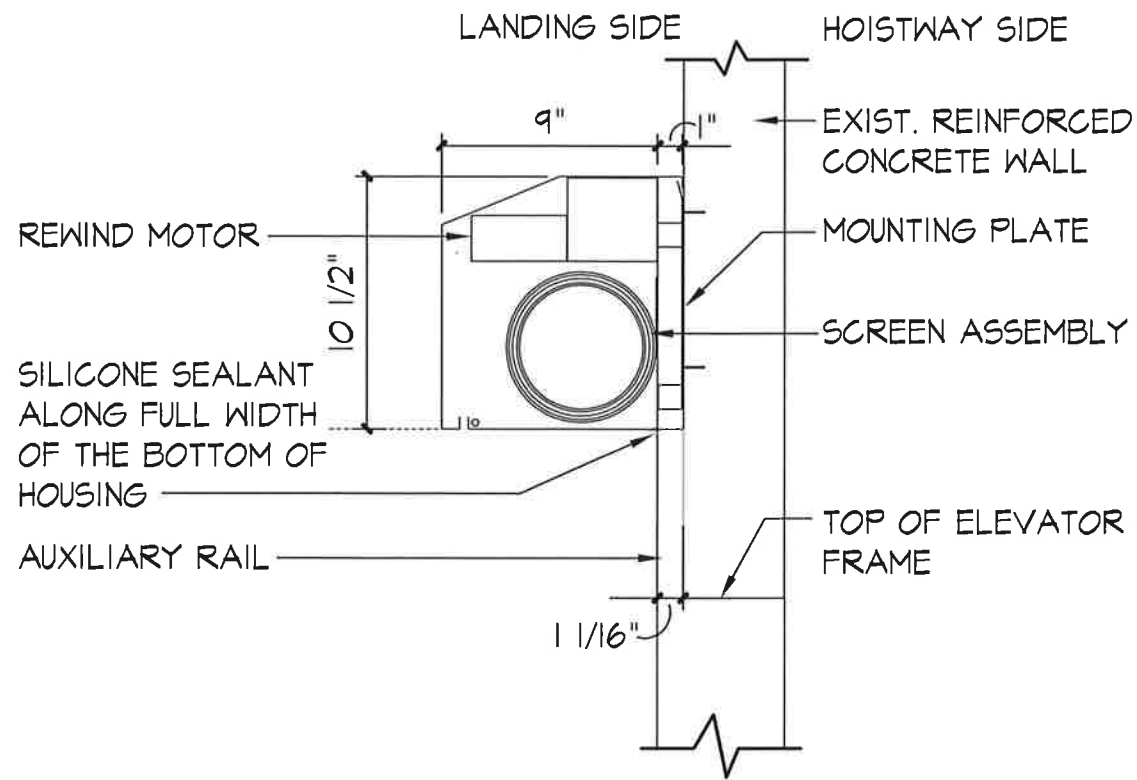
- A. Install smoke containment system components in accordance with manufacturer's written installation instructions.

3.3 FIELD QUALITY CONTROL

- A. Field Test: Follow manufacturer's cycle test procedures.
 - 1. Notify Owner's Representative, local Fire Marshal, alarm sub-contractor and elevator sub-contractor minimum one week in advance of scheduled testing.
 - 2. Complete maintenance service record.

3.4 DEMONSTRATION

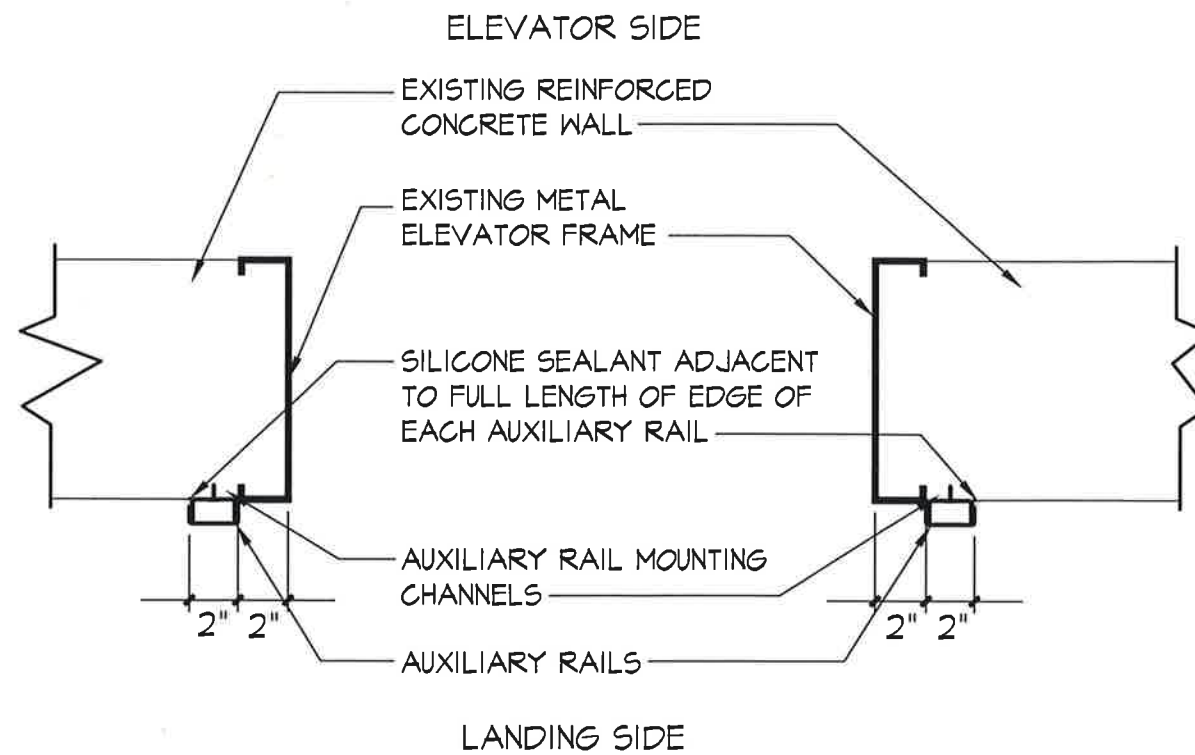
- A. Demonstrate required testing and maintenance procedures to Owner's Representative.
- B. Maintenance and Testing:
 - 1. Perform minimum semi-annual maintenance and testing on each smoke containment system as required by the manufacturer's warranty, code agency evaluation reports, and as required by local authority having jurisdiction.
 - 2. Retain permanent record of tests.
- C. Future Painting: Paint elevator door frame and/or auxiliary rails in accordance with Operation and Maintenance Manual.
- D. Qualified Smoke Guard Inspector assesses unit(s) after exposure to a fire event.



A HEAD SECTION DETAIL

1 1/2" = 1'-0"

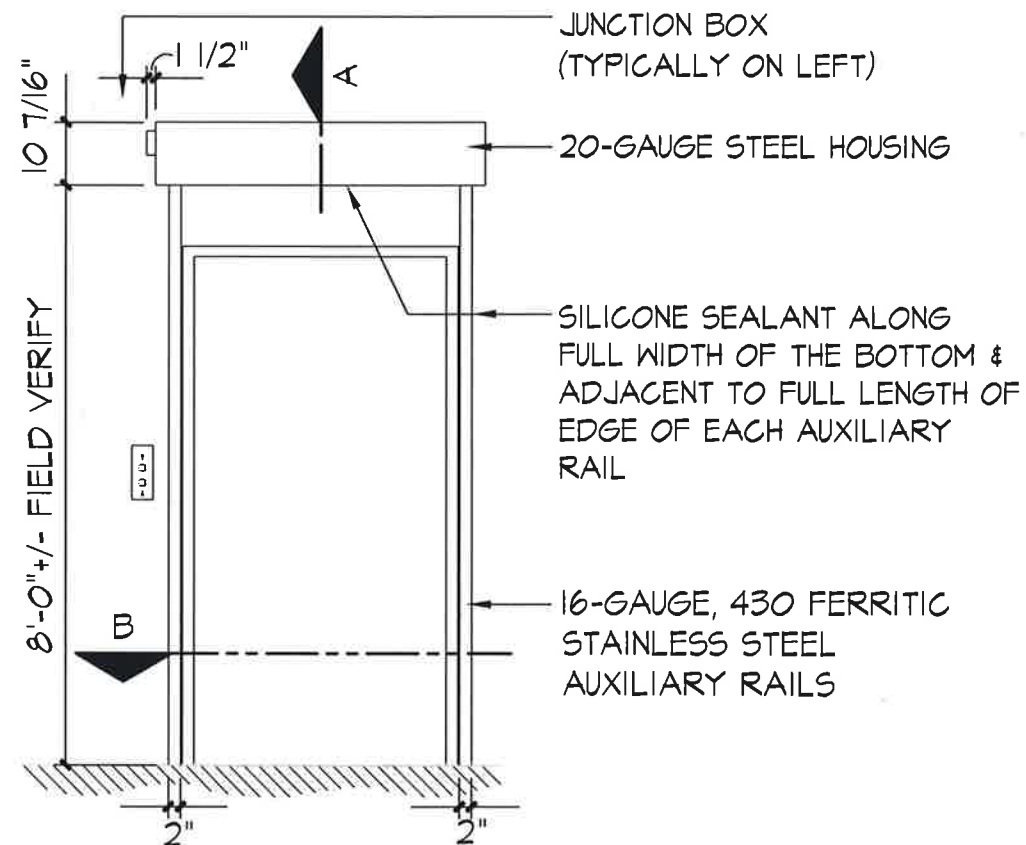
HEAD SECTION DTL



B PLAN @ JAMB

1 1/2" = 1'-0"

PLAN-JAMB



ELEVATION & SECTION: READY STATE

3/8" = 1'-0"

ELEV-SECT

ELEVATOR SMOKE CURTAIN DETAILS



walterrobbs
ARCHITECTURE + INTERIORS + PLANNING

530 NORTH TRADE STREET, SUITE 301
WINSTON-SALEM, NORTH CAROLINA 27101 P 334.725.1371

Project: GUILFORD COUNTY LAW
ENFORCEMENT DETENTION CENTER
401 W. SYCAMORE STREET
GREENSBORO, NC 27401

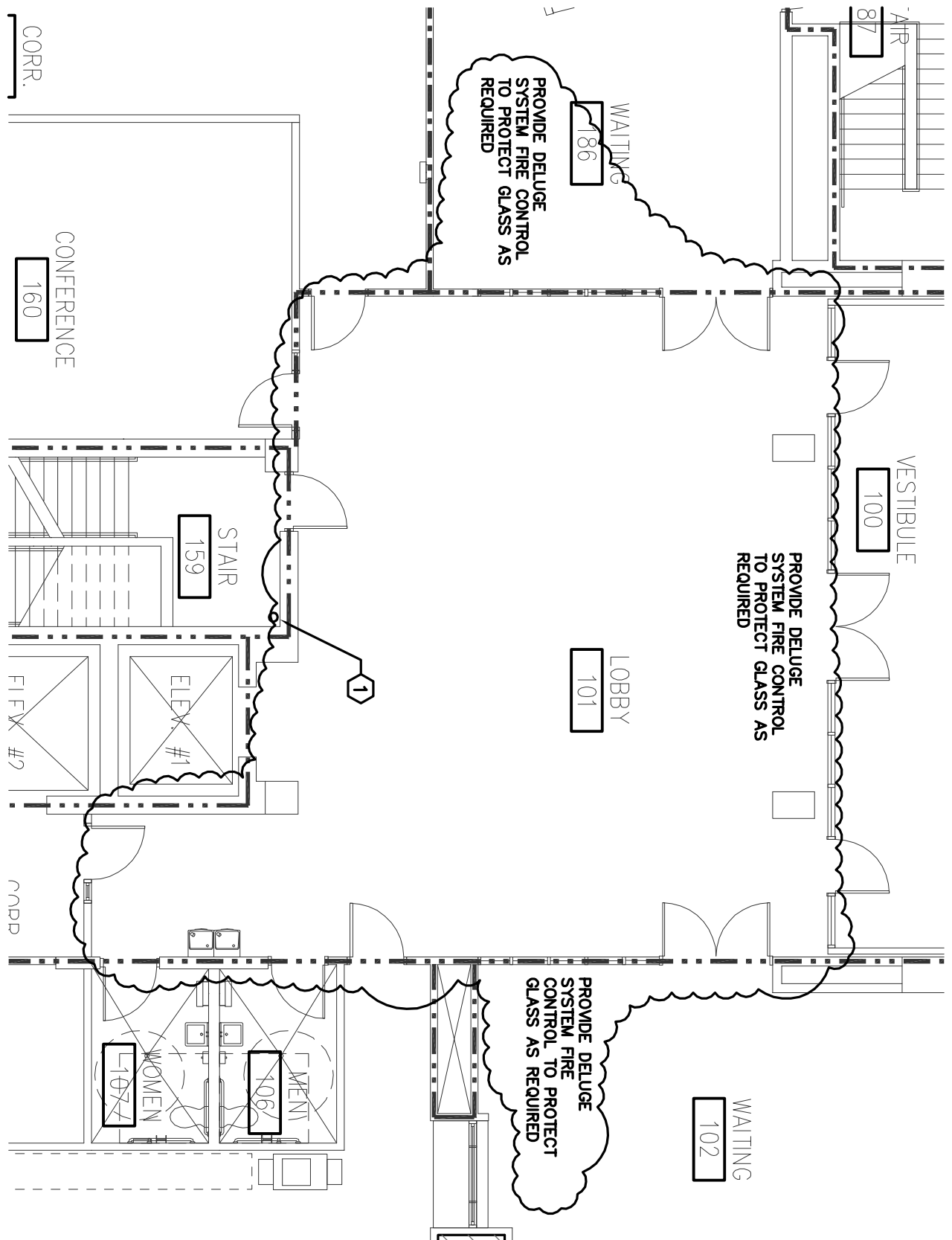
Consultant:

Project No: 17-496

Issue Date: 08-02-2018

Drawing No: 1 OF 1

Related Doc: ADD -4-1



walterrobbs
ARCHITECTURE + INTERIORS + PLANNING

530 NORTH TRADE STREET, SUITE 301
WINSTON-SALEM, NORTH CAROLINA 27101 P 336.725.1371

Project: GUILFORD COUNTY
LAW ENFORCEMENT
CENTER
401 W. SYCAMORE
GREENSBORO, NC

Consultant:
**CONSULTANT
ENGINEERING
SERVICE,
INC.**

PHONE: 724-0139
811 W. FIFTH ST.
WINSTON-SALEM
N.C. 27101

Project No.: 17-496

Issue Date: 8.2.18

Drawing No: 1 of 1

Bulletin No.: BD-FP1

Related Doc.: FP1.1

37122