



May 5, 2016

*Project Update – Division 7*

**Cheryl McQueary, Board Member**

**Mike Mills, PE, Division Engineer**

**Division 7 Team**



## *Division 7 - Stats*



- **Employees** - 540 Permanent
- **Road Miles** - 5,417
- **Bridges** - 1,032
- **Airports** - 3
- **Rail Stations** - 3
- **Interstates** - 4
- **Welcome Centers** - 1
- **Population** - 893,348



## *Division 7 2012-2025 STIP Summary*

- |            |              |                 |
|------------|--------------|-----------------|
| • Highway  | 117 projects | \$ 973 million  |
| • Aviation | 8 projects   | \$ 64 million   |
| • Bike/Ped | 9 projects   | \$ 28 million   |
| • Rail     | 2 projects   | \$ 8 million    |
| • Transit  | 72 projects  | \$ 508 million  |
| • Total:   | 208 projects | \$1.580 billion |
- Programmed amounts include all sources



# *Aviation*

- **Piedmont International (PTI)**
  - Cessna
  - Federal Express
  - HAECO
  - Honda Aircraft
- **Burlington-Alamance**
  - GE Honda Aero Engines
- **Rockingham**



# *PTI Airport*



# Honda Aircraft



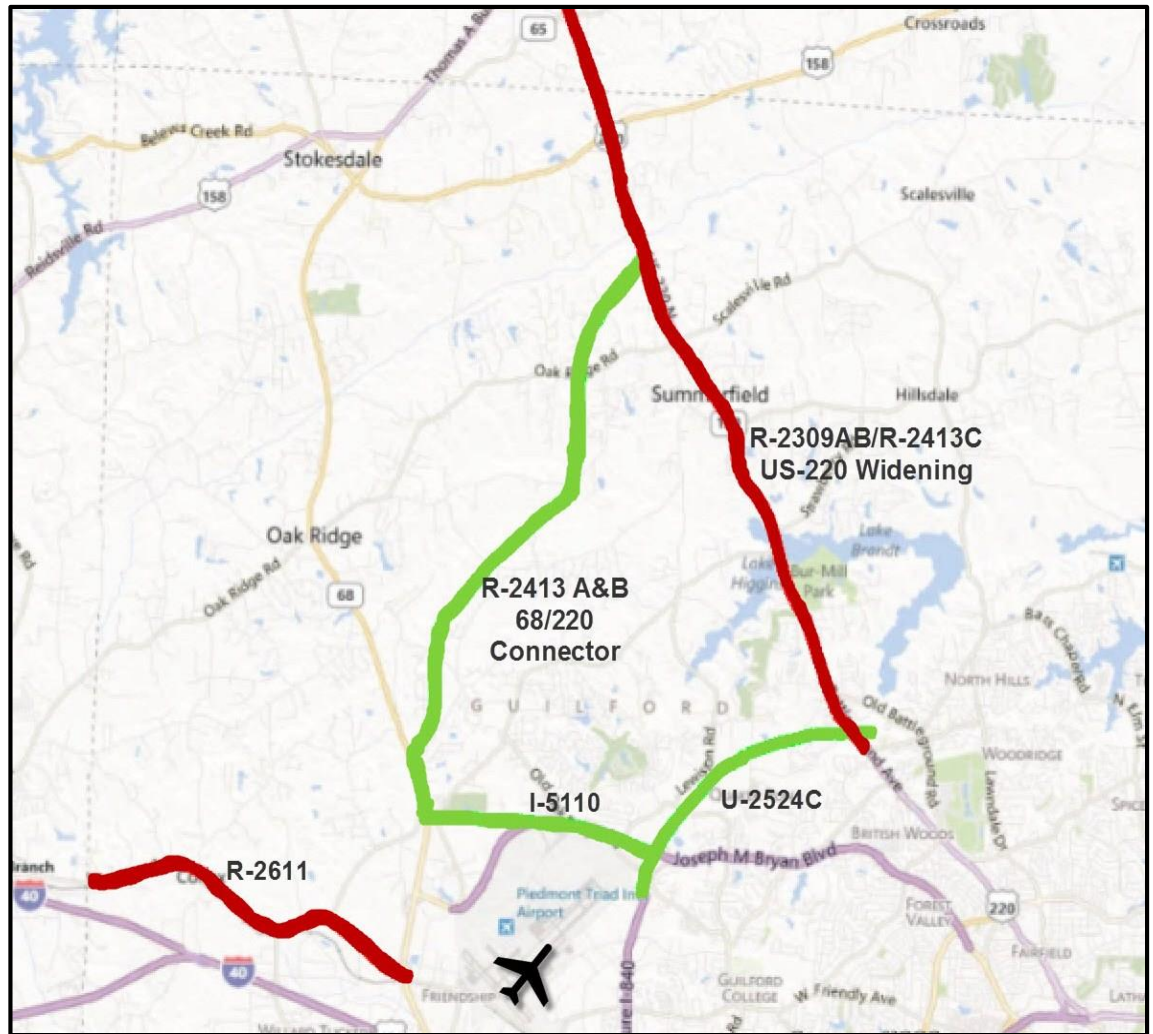
# *HAECO America Airframe Service*

- **Global MRO**
- **600,000 sq ft facility**
- **3 wide-body hangers  
1 narrow-body hanger**
- **1600 employees in  
Triad**
- **Adding 200 employees  
in High Point facility**
- **Adding 177,000 sq ft  
facility at PTI with  
400 employees**



# Greensboro Highway Projects

- 4 projects shown on map
  - Widening of US-220
  - Western Loop
  - Reroute of Bryan Blvd
  - Connecting NC 68 and US 220
- Eastern Loop





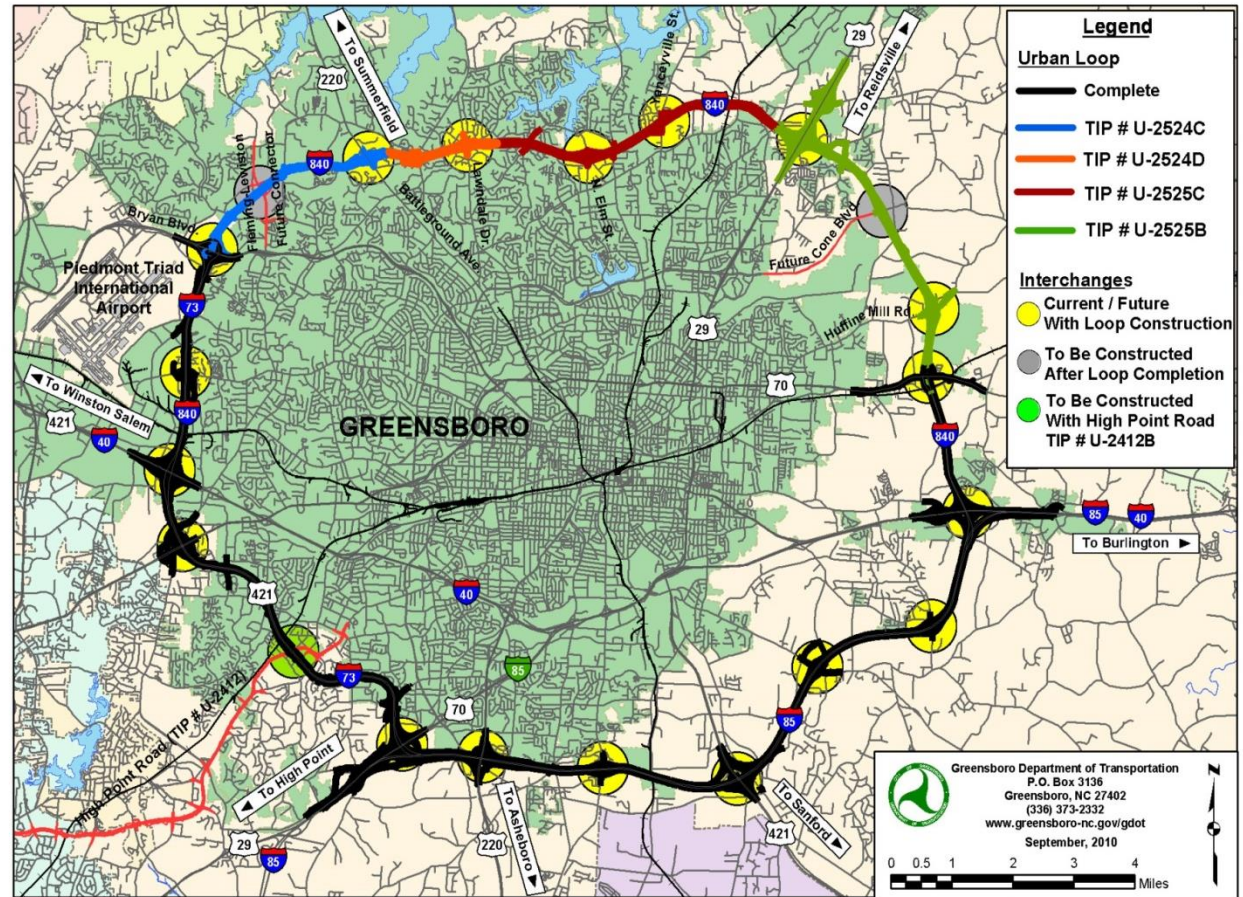
# *PTI Airport*

- **Rerouting Bryan Blvd connecting to NC 68**
- **Beginning of NC 68 to US 220 Connector**



# Greensboro Urban Loop

- Lower half of the Loop is completed (black line)
- Western end is under construction (blue line)
- Eastern end is under construction (green line)
- Northern end in two parts (orange and red lines)



# *Greensboro Loop - Western End*

- **5 miles in length,**
- **6 bridges**
- **\$123 Million investment**
- **Began Construction in October 2013**
- **Open to Traffic September 2017**
- **One of the longest bridge spans over a wetland in NC**
- **Span is approx. 0.8 miles in length**



# *Greensboro Loop - Eastern End*

- **5 miles in length**
- **14 bridges**
- **\$112 Million investment**
- **Began Construction July 2014**
- **Open to Traffic July 2018**

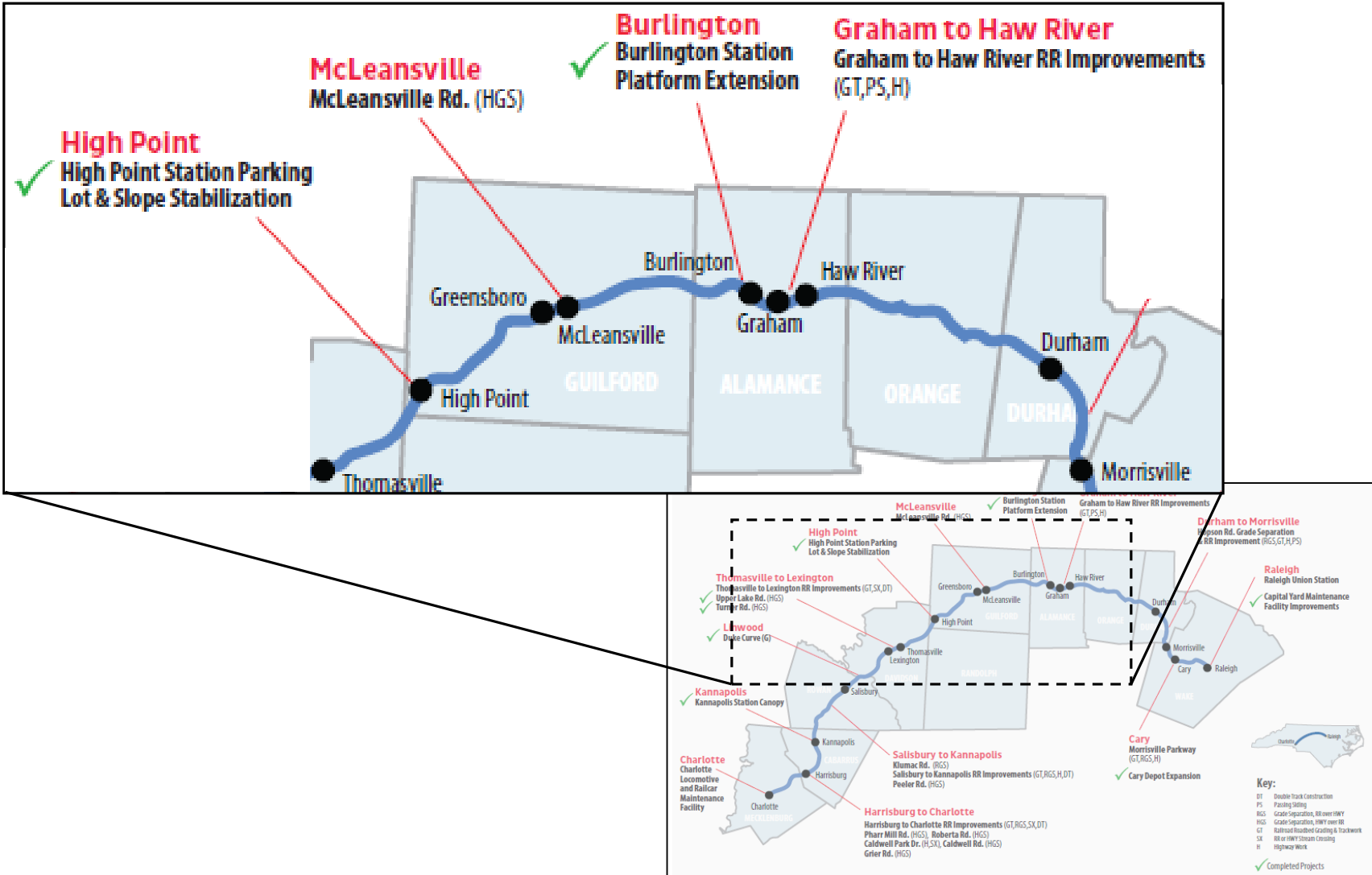


# *NC 220 North Widening*

- **13 miles, 11 bridges**
- **\$96 Million investment**
- **Began Construction  
April 2012**
- **Open to Traffic  
December 2016**



# Piedmont Improvement Projects



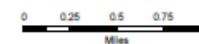
# *McLeansville Road Grade Rail Project*

- **Grade Separation and Highway Improvements**
- **\$7.4 Million investment**
- **Began construction November 2014**
- **Completion February 2017**



# Bike and Ped

- #1 Bike and Ped Statewide project
- 4 mile path
- P3 project between City of Greensboro and Action Greensboro
- \$171.4 M planned, underway and completed economic development





# *Downtown Greensboro Greenway*



# *Downtown Greensboro Greenway*



## *Contact Information*



Cheryl McQueary  
Board Member  
NC DOT Board of Transportation

[clmcqueary@ncdot.gov](mailto:clmcqueary@ncdot.gov)  
336-487-0000

